




< New search

Doctor search results

 **70 doctors** found for **psychiatrist** in **90404**  Search locations

FILTERS

Specialty  Distance  City  Provider Type 

Gender  Language  Hospital name 

10 Miles from 90404 



Galya Rees, MD
Psychiatry



Santa Monica
Wilshire Office
2730 Wilshire
Blvd., Ste 525
Santa Monica,
CA 90403

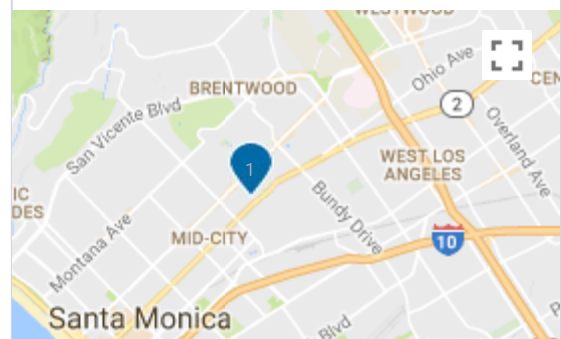
0.8 Miles from
90404

Directions

1-800-954-8000
(toll free)

Skip map

Select a location below for more information





**David Allen Bruce,
MFT
Behavioral Health
Counselor**

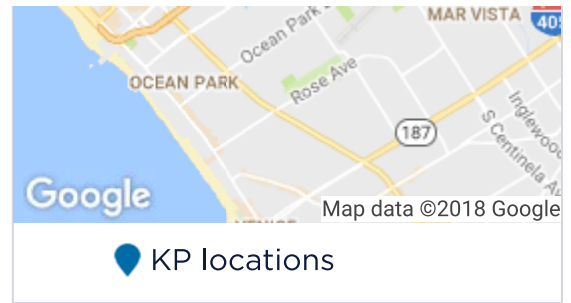


Culver Marina
Medical Offices
12001 Washington
Blvd
Los Angeles,
CA 90066

3.5 Miles from
90404

Directions

1-800-954-8000
(toll free)



**Mirna Aida Edie
Cervantes, LCSW
Behavioral Health
Counselor**

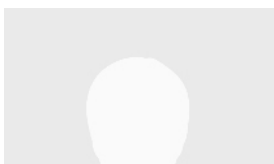


Culver Marina
Medical Offices
12001 Washington
Blvd
Los Angeles,
CA 90066

3.5 Miles from
90404

Directions

1-800-954-8000
(toll free)



**Tivoli Cousineau
Behavioral Health
Counselor**



Culver Marina
Medical Offices
12001 Washington
Blvd
Los Angeles,
CA 90066

3.5 Miles from
90404

Directions

1-800-954-8000
(toll free)



**Consuelo V. Davis,
COUNSELOR
Behavioral Health
Counselor**

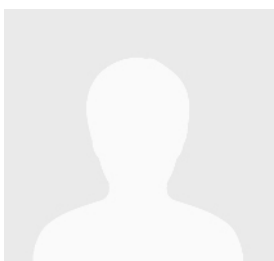


Culver Marina
Medical Offices
12001 Washington
Blvd
Los Angeles,
CA 90066

3.5 Miles from
90404

Directions

1-800-954-8000
(toll free)



**Priscilla C. De
Leon, LCSW
Behavioral Health
Counselor**



Culver Marina
Medical Offices

12001 Washington
Blvd
Los Angeles,
CA 90066

3.5 Miles from
90404

Directions

1-800-954-8000
(toll free)



**Pamela N.
Diefenbach, MD
Psychiatry**

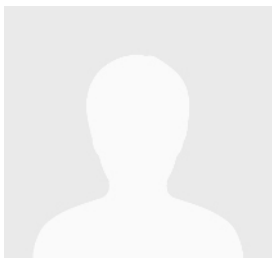


Culver Marina
Medical Offices
12001 Washington
Blvd
Los Angeles,
CA 90066

3.5 Miles from
90404

Directions

1-800-954-8000
(toll free)



**Vera Clement Eck,
MFT
Behavioral Health
Counselor**



Culver Marina
Medical Offices
12001 Washington
Blvd
Los Angeles,
CA 90066

3.5 Miles from
90404

Directions

1-800-954-8000
(toll free)



Ariana Fregoso,
MFT
Behavioral Health
Counselor

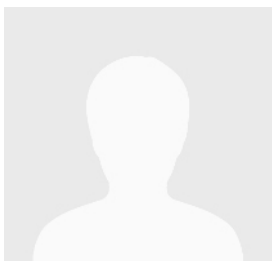


Culver Marina
Medical Offices
12001 Washington
Blvd
Los Angeles,
CA 90066

3.5 Miles from
90404

Directions

1-800-954-8000
(toll free)



Patricia U.
Gonzales Rocca,
MFT
Behavioral Health
Counselor



Culver Marina
Medical Offices
12001 Washington
Blvd
Los Angeles,
CA 90066

3.5 Miles from
90404

Directions

1-800-954-8000
(toll free)



**Luis Enrique
Graciano, LMFT
Behavioral Health
Counselor**

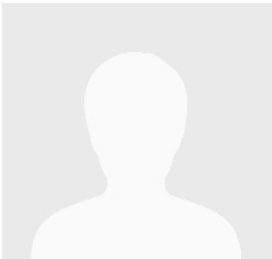


Culver Marina
Medical Offices
12001 Washington
Blvd
Los Angeles,
CA 90066

3.5 Miles from
90404

Directions

1-800-954-8000
(toll free)



**David William
Kane, MFT
Behavioral Health
Counselor**



Culver Marina
Medical Offices
12001 Washington
Blvd
Los Angeles,
CA 90066

3.5 Miles from
90404

Directions

1-800-954-8000
(toll free)



**Richard Emilio
Paliani, MFT
Behavioral Health
Counselor**



Culver Marina
Medical Offices
12001 Washington
Blvd
Los Angeles,
CA 90066

3.5 Miles from
90404

Directions

1-800-954-8000
(toll free)



**Vanessa Palomera,
MFT
Behavioral Health
Counselor**

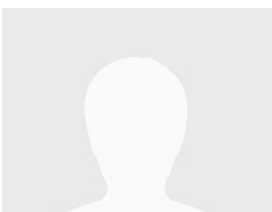


Culver Marina
Medical Offices
12001 Washington
Blvd
Los Angeles,
CA 90066

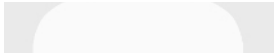
3.5 Miles from
90404

Directions

1-800-954-8000
(toll free)



**Beril Jeannie
Prager, LCSW
Behavioral Health
Counselor**



Culver Marina
Medical Offices
12001 Washington
Blvd
Los Angeles,
CA 90066

3.5 Miles from
90404

Directions

1-800-954-8000
(toll free)



**Sadaf Fatimah
Rahman-Mayet,
MFT
Behavioral Health
Counselor**

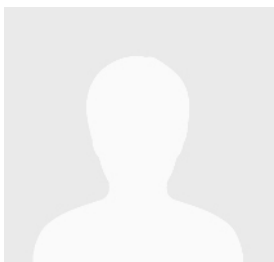


Culver Marina
Medical Offices
12001 Washington
Blvd
Los Angeles,
CA 90066

3.5 Miles from
90404

Directions

1-800-954-8000
(toll free)



**Nancy Walker-
Rosado, MFT
Behavioral Health
Counselor**



Culver Marina
Medical Offices

12001 Washington
Blvd
Los Angeles,
CA 90066

3.5 Miles from
90404

Directions

1-800-954-8000
(toll free)



**Bradford Alexander
Wolfram, MD**
Psychiatry

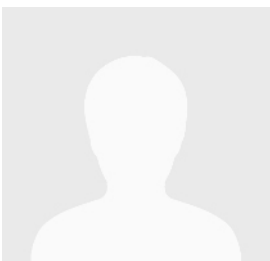


Culver Marina
Medical Offices
12001 Washington
Blvd
Los Angeles,
CA 90066

3.5 Miles from
90404

Directions

1-800-954-8000
(toll free)



**Christine Michell
Aguilar, LCSW**
**Behavioral Health
Counselor**

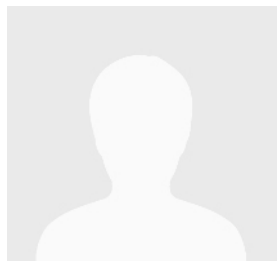


Wateridge
Medical Offices
5105 Goldleaf
Circle
Los Angeles,
CA 90056

6.6 Miles from
90404

[Directions](#)

323-298-3100



Ladan Alamdar,
MFT
Behavioral Health
Counselor



Wateridge
Medical Offices
5105 Goldleaf
Circle
Los Angeles,
CA 90056

6.6 Miles from
90404

[Directions](#)

323-298-3100

- 1
- 2
- 3
- 4
- Next >

Find Out About Related Links

Help with finding
doctors and
locations

Our physicians
Affiliated
providers

What is
emergency and
urgent care?

Contact Member
Services

How to get care

Your personal medical team

An important part of your health care is building a personal relationship with your doctor. To select a primary care physician, search our doctors (in English).

Or

Durable medical equipment	Quality and safety at KP	More
Breastfeeding counseling and resources	DeltaCare USA network for Eligible Pediatric Enrollees ↗	
Glossary		
Timely access to care		

To find:

- a provider's office hours, search our facility directory
- providers in your plan or accepting new patients, call 1-800-464-4000 (toll free) or 711 (TTY for the hearing/speech impaired)

The information in this online directory is updated periodically. The availability of physicians, hospitals, providers, and services may change. Information about a practitioner is provided to us by the practitioner or is obtained as part of the credentialing process. If you have questions, please call us at 1-800-464-4000 (toll free). For the hearing and speech impaired: 1-800-464-4000 (toll free) or TTY 711 (toll free). You can also call the Medical Board of California at 916-263-2382, or visit their website [↗](#).

We want to speak to you in the language that you're most comfortable with when you call or visit us. Qualified interpreter services, including sign language, are available at no cost, 24 hours a day, 7 days a week during all hours of operations at all points of contact. We do not encourage the use of family, friends or minors as interpreters. Only the services of interpreters and qualified staff are used to provide language assistance. These may include bilingual providers, staff, and healthcare interpreters. In-person, telephone, video, and alternative modes of communication are available. Learn more about interpreter services.

If you would like to report an error in provider or facility information, please contact us.

Kaiser Permanente enrollees have full and equal access to covered services, including enrollees with disabilities as required under the Federal Americans with Disabilities Act of 1990 and Section 504 of the Rehabilitation Act of 1973.

Kaiser Permanente uses the same quality, member experience, or cost-related measures to select practitioners and facilities in Marketplace Silver-tier plans as it does for all other Kaiser Foundation Health Plan (KFHP) products and lines of business. Members enrolled in KFHP Marketplace plans have access to all professional, institutional and ancillary health care providers who participate in KFHP plans' contracted provider network, in accordance with the terms of members' KFHP plan of coverage. All Kaiser Permanente Medical Group physicians and network physicians are subject to the same quality review processes and certifications.

Kaiser Permanente uses the same geographic distribution consideration to select hospitals in Marketplace plans as it does for all other Kaiser Foundation Health Plan (KFHP) products and lines of business. Accessibility of medical offices and medical centers in this directory: All Kaiser Permanente facilities are accessible to members.

